

22405

23242

4 Hours / 70 Marks

Seat No.

--	--	--	--	--	--	--	--

- Instructions :**
- (1) All Questions are *compulsory*.
  - (2) Answer each next main Question on a new page.
  - (3) Illustrate your answers with neat sketches wherever necessary.
  - (4) Figures to the right indicate full marks.
  - (5) Assume suitable data, if necessary.
  - (6) Use of Non-programmable Electronic Pocket Calculator is permissible.
  - (7) Mobile Phone, Pager and any other Electronic Communication devices are not permissible in Examination Hall.

**Marks**

**1. Attempt any THREE of the following :**

**12**

- (a) Draw graphical symbols for the following :
  - (i) Burnt Brick Masonry
  - (ii) Revolving Door
  - (iii) Right side Hung Window
  - (iv) W.C. Indian Type
- (b) Draw following types of Lines :
  - (i) Centre Line
  - (ii) Pointer Line
  - (iii) Section Line
  - (iv) Hidden Line
- (c) Define Elegance and Economy in principles of Planning.
- (d) State the importance of Site Plan and Area Statement in Civil Engineering Drawing.
- (e) Define the following terms :
  - (i) Station Point
  - (ii) Vanishing Point

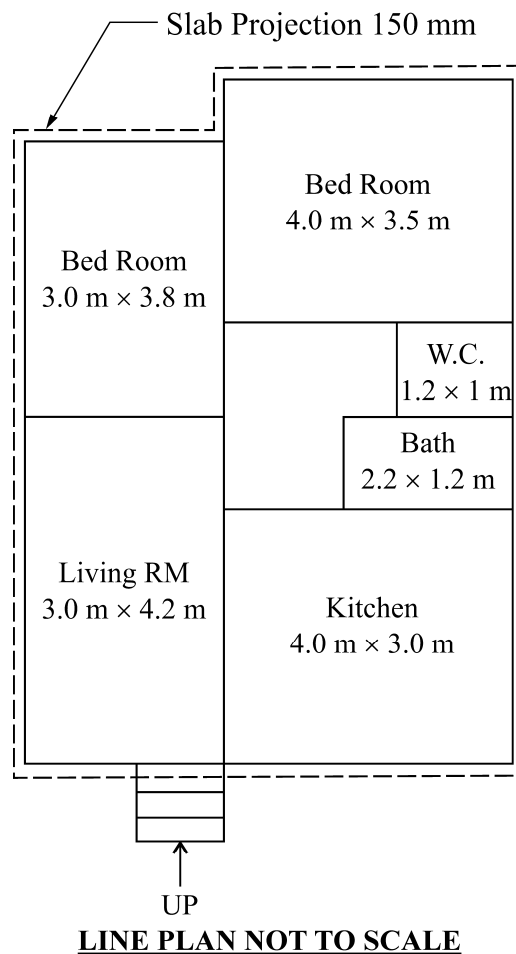


2. Draw to a suitable scale the Line Plan of a Bank Building with ATM facility and different units. Also show position of Doors and Windows. 10

3. **Attempt the following :** 12

Fig. No. 1 shows a Line Plan of residential building. Draw to a Scale of 1:50 the developed Plan. Show all dimensions and label the units. Use following data :

- (i) Plinth height = 600 mm
- (ii) Super Structure of B.B. Masonry with all walls 300 mm thick and internal walls of bath and WC 100 mm thick.
- (iii) Assume Chajja Projection 750 mm.
- (iv) Assume Plinth Projection 50 mm.
- (v) Assume suitable data if necessary.



**Fig. No. 1**



22405

[4 of 4]

(b) Draw a plan and section of a single flight of a R.C.C. staircase from the following data :

- (i) Number of risers – 10 of 150 mm height
  - (ii) Number of Treads – 9 of 300 mm width
  - (iii) Width of Staircase – 1200 mm
  - (iv) Width of Landing – 1200 mm
-